

# Global Mapping of Genetic Interactions

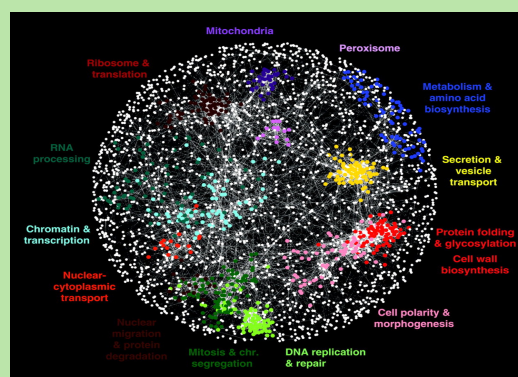
Produced by Dr. Fayna Garcia-Martin

**April 9<sup>th</sup>** 15:00 - 17:00

**Community Hall in Shionogi Innovation Center for Drug Discovery (N21W11)**

(シオノギ創薬イノベーションセンター 産学コミュニティホール)

**registration free**



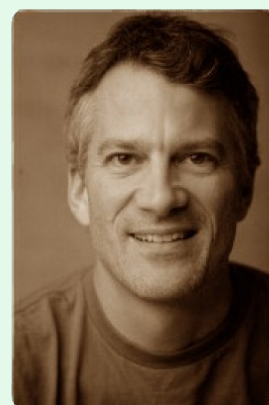
## "The Genetic Landscape of a Cell"

by Prof. Charles Boone

(Terrence Donnelly Centre for Cellular and Biomolecular Research, University of Toronto, Canada)

"The yeast model system is famous for its relatively simple but elegant genetic methodology, often referred to as the "awesome power of yeast genetics." The genetic networks in my lab identify genes that work together in the cell to carry out essential functions which may provide insight into our understanding of the molecular basis of inherited traits."

(*Science*, vol. 327, 2010; *Nat Biotechnol.* vol. 29, 2011)



## " Linking compounds to cellular targets by high-throughput chemical genomics profiling"

by Dr. Jeff Piotrowski (RIKEN Institute, Tokyo)

For further information write to: [faynagarciam@glyco.sci.hokudai.ac.jp](mailto:faynagarciam@glyco.sci.hokudai.ac.jp)